

DOOR TRACK SYSTEMS

HARDWARE AND ACCESSORIES



AVAILABLE DOOR SIZES

Standard (in stock):

- 8W X 8H
- 8W X 10H
- 8W X 12H
- 8W X 14H
- 10W X 10H
- 10W X 12H
- 10W X 14H
- 10W X 16H
- 12W X 10H
- 12W X 12H
- 12W X 14H
- 12W X 16H
- 14W X 10H
- 14W X 12H
- 14W X 14H
- 14W X 16H
- 16W X 10H
- 16W X 12H
- 16W X 14H
- 16W X 16H

Special order:

- 6W X 8H
- 6W X 10H
- 6W X 12H
- 18W X 10H
- 18W X 12H
- 18W X 14H
- 18W X 16H



#3 Slotted Round Keyhold Track

For smooth, easy gliding operation. 14 gauge galvanized construction in self-cleaning design.



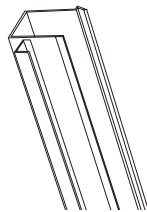
3-1PC Bracket

Use with #3 slotted round track. Rivets fit through keyway slots in each track section, allowing track, bracket and cover to be joined.



600 Jamb Latch

7" jamb latch is used on inside of jamb to secure sliding doors; can be ordered for either right or left hand applications.



#1001 Quick Frame

Lumber fit for standard 2 x 4 or 2 x 6 and provides smooth, safe sides for door openings.



#60 Guide Rail Bracket

Slotted hole in each leg allows both lateral and vertical adjustments. Bolts and nuts included.



RBP-203-L Trolley

Adjustable, pivot and swing action with single strap apron. For doors 1-1/2" to 2-3/8" thickness.

(Plastic wheels with ball bearings.)



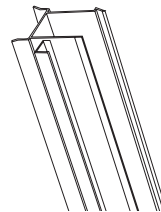
3-BC Bracket

This slide-on bracket face mounts for use with #3 slotted track.



630 Sliding Bolt Latch

Ideal for livestock/horse barns, this heavy duty 1/2" x 10" steel bolt doubles as a handle/pull, and may be used at left or right.



#1002 H-Frame

Designed for use with bi-parting doors, provides concealed mating between units covering both door edges.



#64 Rail Guide

Fabricated from 16 gauge galvanized steel and mounts with #60 brackets. Engages the bottom door guides to hold the door in place.



RBP-303-T Trolley

Bolt-through simplicity with pivot/swing action. A 1/2" x 9" offset bolt adjusts easily. Generous vertical adjustment for various door materials.

(Plastic wheels with ball bearings.)



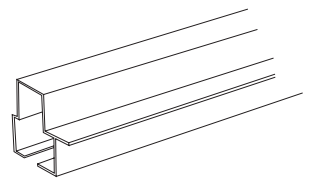
540 Door Stop

For 2" doors, made from rugged zinc-plated steel and ribbed to increase strength. Holes accept 5/16" bolts or lag screws.



800 Stay Roller

Fabricated from 3/16" zinc plated steel, and adjusts from 1" to 3-3/4". Non-marking plastic wheel mounted on sturdy 1/2" bolt.



#1003 Bottom Rail

Attaches to bottom of door and accepts the #64 rail guide to firmly anchor and guide door along building during operation. Order for doors 1-1/2" thick.



#68 Door Stop

For use with #64 bottom door guide. Stops door and prevents from disengaging with guide rail.



Manufacturer of Door Track Hardware. Over 75 years of tradition in excellence.



50-3 Door Pull

This door pull is 1-1/4" wide and has a 6-5/8" overall length. Retains 1-3/4" deep clearance to allow use with gloved hand.



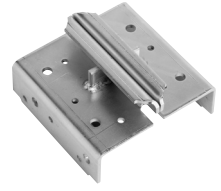
50-3W Door Pull

This door pull is 1-1/4" wide and has a 6-5/8" overall length. Retains 1-3/4" deep clearance to allow use with gloved hand.



545 Door Guide/Stop

Ideal for corrugated metal-clad doors, this adjustable guide may be expanded in width for doors from 2-1/2" to 6" thick. Curved surface gives natural lead-in and can be mounted sideways for use as a stop.



520 Door Guide/Stop

Installs on 6 x 6 post or in concrete, in the center of split doors or a large single door. For use in pairs.



610 Center Door Latch

Easily and tightly secures bi-parting doors with cam-action latch. A strong bolt hooks at one end to fit strike plate; opposite end is threaded to allow adjustment of latch tension. For wood doors 1-1/2" or thicker.



8-3C Bracket

Double track bracket (face mount), bolts included. Us with #3 slotted track.



8-3CFB Bracket

Double track bracket. Same as 8-3C but with flashing bracket pre-attached at factory to accept a Double Track Cover and is used with #3 slotted track.



230-L Trolley

Adjustable, pivot and swing action with single strap apron. For doors 1-1/2" to 2-3/8" thickness. Includes four 5/16" carriage bolts per pair.

(Plastic wheels with bronze bushings.)



303-T Trolley

Combines bolt-through simplicity and economy with pivot/swing action. A 1/2" x 9" offset bolt adjusts easily. Generous vertical adjustment for variety of door materials.

(Plastic wheels with bronze bushings.)



3-FB Flashing Bracket

Round-up flashing bracket taps in with hammer.



SC-3 Track Splice Collar

Track splice collar.



900 Chain Snugger

Ring and hook simply secure a chain to desired length for holding bi-parting sliding door leaves together. Designed for use with clad wood-frame doors, rods mount on opposite sides of joining door verticals, angling upward from horizontal door spacers toward the inside of verticals where the doors meet. The chain will then drop to lowest position for snug fit.



a Euramax company

Corporate Office
3449 Hempland Road
Lancaster, PA 17601
800.477.2741
www.fabral.com