

# Strata Rib™ x/

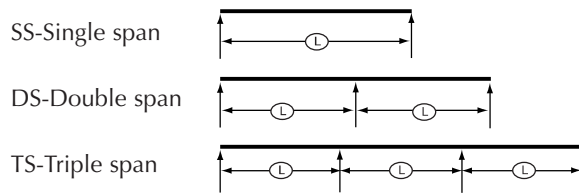
Strata Rib™ x/ Allowable Load (psf)									
Gauge	Span	Condition	Span (ft. - in.)						
			2-0	2-6	3-0	3-6	4-0	4-6	5-0
29	SS	f	97	62	43	31	24	19	15
		L/120	97	62	43	29	19	13	10
	DS	f	90	57	40	29	22	17	14
		L/120	90	57	40	29	22	17	14
	TS	f	112	72	50	36	28	22	18
		L/120	112	72	50	36	28	22	18
26*	SS	f	131	84	58	42	32	25	21
		L/120	131	84	58	39	26	18	13
	DS	f	125	80	55	40	31	24	20
		L/120	125	80	55	40	31	24	20
	TS	f	156	100	69	51	39	30	25
		L/120	156	100	69	51	39	30	25

### Loading Table Legend

f-Load limited by flexural bending stress

L-Span (Inches)

L/xxx-Load limited by deflection



### Notes:

- Top values based on allowable stress. Bottom values based on allowable deflection of L/120.
- Steel conforms to ASTM A653 (Zincalume®) with 80,000 psi minimum yield.
- Values are based on the American Iron and Steel Institute (AISI) *Cold Formed Steel Design Manual* (1996 Edition).

*Specifications subject to change without notice.*

\* 26 gauge available in Sacramento and Anchorage only

### Strata Rib™ x/ Section Properties

Gauge	Wt. (lbs/ft <sup>2</sup> )	S+ (in <sup>3</sup> /ft)	I+ (in <sup>4</sup> /ft)	S- (in <sup>3</sup> /ft)	I- (in <sup>4</sup> /ft)
29	0.62	0.0162	0.0097	0.0150	0.0080
26*	0.85	0.0219	0.0130	0.0209	0.0117

### DuraTech™ x/ Color Retention Comparison

